

# Research Data Assistance Center (ResDAC)

Presented By  
Barbara Frank

AcademyHealth National Health Policy Conference  
Adjunct Meeting

February 4, 2009

# ResDAC Role

The Research Data Assistance Center (ResDAC) is a CMS contractor that provides free assistance to academic, government and non-profit researchers interested in using Medicare and/or Medicaid data for their research.

ResDAC is staffed by a epidemiologists, public health specialists, health services researchers, biostatisticians, and health informatics specialists from the University of Minnesota.

# ResDAC Contract Information

- Contract Number HHSM-500-2005-000271
- CMS Federal Project Officer:
  - Linh Kennell  
Centers for Medicare & Medicaid Services  
Office of Research, Development & Information
  - [Linh.Kennell@cms.hhs.gov](mailto:Linh.Kennell@cms.hhs.gov)

# ResDAC Role

To help CMS increase the number of researchers skilled in accessing and using CMS databases for studies of the Medicare and Medicaid programs and beneficiaries.

# ResDAC Assistance

- ResDAC web site, [www.resdac.umn.edu](http://www.resdac.umn.edu)
  - Information specific to CMS data files and data requests
    - What's new-updates on CMS data release policies
      - Most current information regarding Part D data
    - Available Data
    - Data Documentation
    - Requesting Data
    - FAQs
    - Outreach presentations
    - ResDAC Technical Register for assistance

# ResDAC Assistance

- ResDAC web site, [www.resdac.umn.edu](http://www.resdac.umn.edu)
  - Tools to support health services research
    - Statistical links
    - Health services links

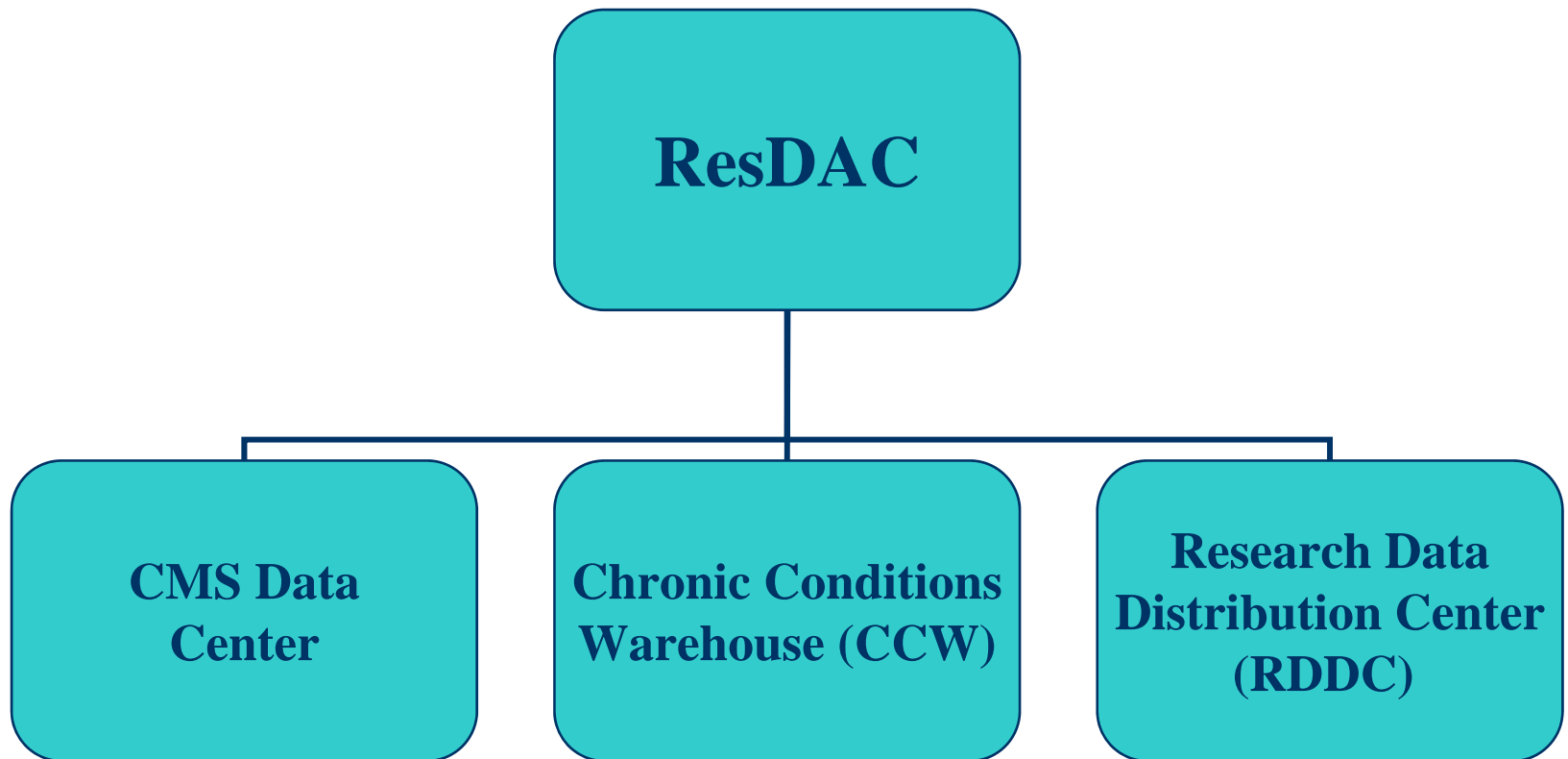
# How to Contact the ResDAC Assistance Desk

- Phone
  - Toll free: 888-9ResDAC (888-973-7322 )
- email
  - [resdac@umn.edu](mailto:resdac@umn.edu)
- WEB
  - [www.resdac.umn.edu](http://www.resdac.umn.edu) (information)
  - [resdac.oit.umn.edu](http://resdac.oit.umn.edu) (request assistance)

# ResDAC Assistance

- ResDAC Assistance Desk functions:
  - Answer questions regarding Medicare and Medicaid data: data access and availability, record layouts, individual variables, location of Medicare and Medicaid program information
  - Work with researchers from first inquiry to submission of a complete request to CMS for data
  - Support ResDAC website

# ResDAC & Sources of CMS Data Files



# Available CMS Data

- **Medicare Utilization & Enrollment**
  - Available for the years 1991 to 2007 but data prior to 2000 has a longer data fulfillment timeline
- **Part D Enrollment & Event Data**
  - Available in Phases for years 2006 & 2007
- **Assessment Data**
  - **Outcome and Assessment Information Set (OASIS)**
    - Available July 1999 to 2008
  - **Long Term Care Minimum Dataset (MDS)**
    - Available October 1998 to 2008
  - **Inpatient Rehabilitation Facility Patient Assessment Instrument (IRF-PAI)**
    - Available January 2002 to 2008

# Available CMS Data

- Medicaid Utilization & Enrollment (MAX)
  - Currently available for all 50 States plus DC for 1999 - 2004
- Cost Reports
  - Available 1996 -2008

# Available CMS Data

- Medicare Current Beneficiary Survey (MCBS)
  - Rolling Panel Survey of approximately 16,000 per year
- Includes: Aged, Disabled, and Institutionalized Medicare beneficiaries
- Source of information on socioeconomic and demographic characteristics, health status and functioning, health care use and expenditures, and health insurance coverage.

# Available CMS Data

- Medicare Current Beneficiary Survey (MCBS)
- Data Available:
  - Access to Care module available 1991 - 2006
  - Cost and Use module available 1992 – 2005
- Part D data will be integrated into MCBS

# Available Medicare Data - RDDC

- In October 2005, CMS awarded a contract establishing the Research Data Distribution Center (RDDC)
- RDDC distributes RIF Medicare enrollment and utilization files for the years 1991 to 2007 (current)
- RDDC Beneficiary Annual Summary Files
  - <http://www.resdac.umn.edu/ddvh/index.asp>

# Files for Researchers

- Denominator File
- SAFs: Standard Analytical Files – Claim based files
- MedPAR: Medicare Provider Analysis and Review.
  - Each observation contains aggregated data of all facility claims related to one episode of care
  - An episode of care is either a hospital or skilled nursing facility stay.

# Files for Researchers

- Each SAF contains claims for services rendered in one calendar year (based on claim-through date)
- Each July, CMS SAFs are created and finalized for the prior year's claims, capturing 98% of that year's claims (CCW flexible)
- 2000-2007 SAFs are currently available

# Available CMS Data - CCW

- Chronic Conditions Warehouse (CCW) Data
- 21 Chronic Conditions
- 5% Enhanced Sample
  - Chronic Conditions Flagged
  - Control Group available
  - 1999 to present available
- 100% Cohort Sample available 2000 - 2007

# CCW Chronic Conditions

- Acute Myocardial Infarction
- Alzheimer's Disease
- Alzheimer's Disease, Related Disorders, or Senile Dementia
- Atrial Fibrillation
- Cataract
- Chronic Kidney Disease
- Chronic Obstructive Pulmonary Disease
- Depression
- Diabetes
- Glaucoma
- Heart Failure

# CCW Chronic Conditions

- Hip/Pelvic Fracture
- Ischemic Heart Disease
- Osteoporosis
- Stroke / Transient Ischemic Attack
- Breast Cancer
- Colorectal Cancer
- Prostate Cancer
- Lung Cancer
- Endometrial Cancer
- Osteoarthritis
- Rheumatoid Arthritis

# CCW Data Files

- Beneficiary Summary File
  - Available for 1999/2000 - 2007
- Chronic Conditions Summary File
  - Available for 1999/2000 - 2007

# Part D Data Available

- Part D Data Files
  - <http://resdac.umn.edu/ddvh/>
- Part D Denominator
- Phase I PDE data
- Phase II PDE data

# Part D Data Release Phases

- CMS has designed a phased schedule for release of the Part D Prescription Drug Elements (PDE) data for Research Identifiable File (RIF) requesters.

# ResDAC Research Data Assistance Center

- Home ▾
- About Us ▶
- Available CMS Data ▶
- Requesting CMS Data ▶
- Education ▶
- Technical Publications ▶
- Statistical Resources ▶
- Organizations' Links ▶

Search



## Research Data Assistance Center

1-888-9RESDAC  
1-888-973-7322  
resdac@umn.edu

[Submit a Request](#)

The Research Data Assistance Center (ResDAC) is a [CMS](#) contractor that provides free assistance to academic, government and non-profit researchers interested in using Medicare and/or Medicaid data for their research. ResDAC is staffed by a consortium of epidemiologists, public health specialists, health services researchers, biostatisticians, and health informatics specialists from the [University of Minnesota](#).

### What's New

#### Registration for CMS 101 and CMS 105 to open Jan. 27, 2009

(posted 1/12/09)

**Registration for the CMS 101 and CMS 105 Workshops will open January 27, 2009.** CMS 101 is being held in Minneapolis May 4-6, 2009. CMS 105 is being held in Minneapolis on June 2nd or 3rd. Please see [Workshops](#) for more information.

#### Medicare Part D Data Roll Out Schedule

CMS has designed a phased schedule for release of the Part D Prescription Drug Elements (PDE) data for Research Identifiable File (RIF) requesters. The first phase are researchers with existing RIF Data Use Agreements (DUAs) that plan to amend the DUA to include Part D data to meet project aims. For these first phase requesters, a [limited number of data elements](#) will be available for requesting. The second phase requesters are new RIF DUAs for stand-alone Part D data projects. Phase II projects will not be allowed to link any of the [PDE data](#) with any other data files except for the Part D Denominator file, and Phase II data will not contain any of the proposed supplemental files for the PDE data. All other RIF projects will be in the third phase of the release schedule.

CMS has set prices for the Part D data available for the first two phases of the PDE data release, and researchers may request cost estimates for those projects by contacting the ResDAC Help Desk. For the Phase I amendment request process, please contact the ResDAC Help Desk. For Phase II Part D requests please see

# Part D Data Release Phases

- The first phase (Phase I) are researchers with existing RIF Data Use Agreements (DUAs) that plan to amend the DUA to include Part D data to meet project aims. For these first phase requesters, a limited number of data elements will be available for requesting.

# Part D Phase I Data

Phase I - Prescription Drug Event Data Variable List		
#	PDE Variable	Source
1	Beneficiary ID*	Researcher's Finder File
2	CCW Beneficiary ID	Beneficiary ID - <i>encrypted</i>
3	Date of Service	PDE #8 (SRVC_DT)
4	NDC	PDE #15 (PROD_SRVC_ID)
5	Brand Name	FDB label name (BN)
6	Generic Name	FDB (GNN)
7	Drug Form	FDB dosage form (GCDF)
8	Form description	FDB dosage descriptions (gcdf_descr)
9	Drug Strength	FDB (STR)
10	Quantity Dispensed	PDE #18 (QTY_DSPNSD_NUM)
11	Days Supply	PDE #19 (DAYS_SUPLY_NUM)
12	Gross Drug Cost	PDE – derived (#27 Ingredient cost pd + #28 Dispensing fee pd + #29 Total amount attributed to sales tax) (TOT_RX_CST_AMT)
13	Beneficiary Out of Pocket Amount	PDE #32 (PTNT_PAY_AMT)
14	Route of Administration Code	(GCRT2)
15	Route Description	(RT)

\*Input variable only

# Part D Phase II Data

- The second phase requesters are new RIF DUAs for stand-alone Part D data projects. Phase II projects will not be allowed to link any of the PDE data with any other data files except for the Part D Denominator file and the CCW Chronic Conditions Summary file. Phase II data will not contain any of the proposed supplemental files for the PDE data.

# Part D Phase II Data

- PDE Elements found at <http://www.cms.hhs.gov/PrescriptionDrugCovGenIn/Downloads/PDEDataElements.pdf>
- Depending on type of researcher, some of the elements may be encrypted/blanked and/or aggregated

# Part D Phase II Data

- Phase II Data are available as 5%, 10% or 20% random samples
- Can also request data based on specific selection criteria such as National Drug Codes (NDCs)

# Limitations of Medicare Data

- Parts A & B claims data for the Fee-For-Service (FFS) population only.
- No Part C encounter data available.
- Part D data includes Managed Care beneficiaries. 2006 data may not be complete annual coverage for beneficiary.

# Research Identifiable Data Request

CMS requires that all Research Identifiable Data Requests (such as CCW data) be reviewed by ResDAC prior to ResDAC submitting to CMS.

ResDAC will be the portal for all Part D requests. Part D data requests will be submitted by ResDAC directly to CMS.

# CMS Data Request Process

Data Request Packets:

New Use requests:

[http://www.resdac.umn.edu/CCW/requesting\\_data\\_NewUse.asp](http://www.resdac.umn.edu/CCW/requesting_data_NewUse.asp)

# Part D Data Request Process

- Phase I is an amendment request and the necessary documents can be found at:
- [http://www.resdac.umn.edu/Medicare/requesting\\_data\\_RIF\\_Amendment\\_to\\_Existing\\_DUA\\_PartD.asp](http://www.resdac.umn.edu/Medicare/requesting_data_RIF_Amendment_to_Existing_DUA_PartD.asp)
- Phase II is a new use request

# Goal of Data Request

- Translate researcher needs for correct data extraction processes in order to complete study objectives with minimum data necessary
- Number of records and/or variables
- Options for requesting data

# Data Selection

- Researcher determines study cohort selection characteristics
  - 100%, 5% national samples
  - Geography, beneficiary or provider
  - Other beneficiary demographics
  - Clinical criteria or Chronic Condition
  - Known cohort with a Numeric ID

# Data Request Packet

- Written Data Request Letter
- Executive Summary/Study Protocol
- Data Use Agreement (DUA)
- IRB approval, HIPAA waiver
- Evidence of Funding
- Specification Worksheet
- Privacy Board Review Summary
- (Federal Project officer letter)
- CMS Cost Estimate
- Variable Selection and Justification Worksheets
- ResDAC Review Letter

# Data Request Packet

- If requesting Assessment data or Part D, you will also need to justify each variable requested and will only be approved for variables necessary for your study.

# Data Request Process

- If request involves Part D data, the request will first be reviewed by the Part D Work Group prior to Privacy Board Review (if necessary).

# ResDAC Contact Information

- Phone
  - Toll free: 888-9ResDAC (888-973-7322 )
- email
  - [resdac@umn.edu](mailto:resdac@umn.edu)
- WEB
  - [www.resdac.umn.edu](http://www.resdac.umn.edu) (information)
  - [resdac.oit.umn.edu](http://resdac.oit.umn.edu) (request assistance)